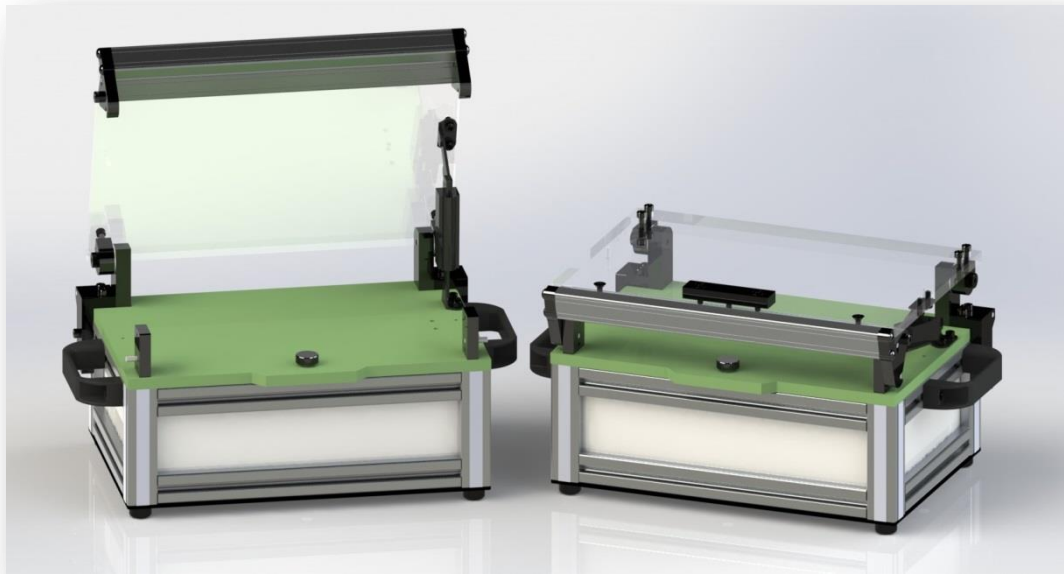


# CTS Model 1208

## Mechanical Fixture Kit



Sleek, rugged, streamline design offering traditional clamshell style actuation with hinges featuring increased UUT testable area and height as a standard. Easily customizable if our standard doesn't meet your requirements.

- UUT Test Area: (W X D X H): 9.0" X 6.0" X 2.0"  
(UUT may extend beyond test area)
- Overall Dimensions: (W X D X H): 14.9" X 8.9" X 7.7"  
(dimensions include handles, hinges)
- Weight: Approximately 11 lbs.
- Includes 8 ESD pushers/nuts

### Options:

- Customization of fixture plates - submission of data required for quote
- FR4, Acrylic, Polycarbonate plates available
- Installation of fixture hardware to include:  
Probes & Sockets, locating pins, push rods, side guides, connectors, interface pcb, interlock switch, etc.
- Wiring per customer specification
- Safety shroud
- Stripper plate